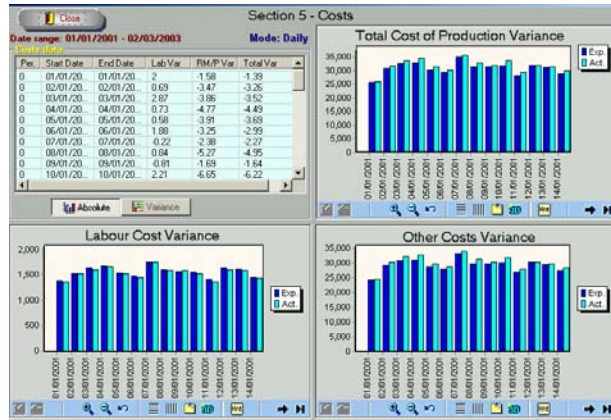


5. COSTS

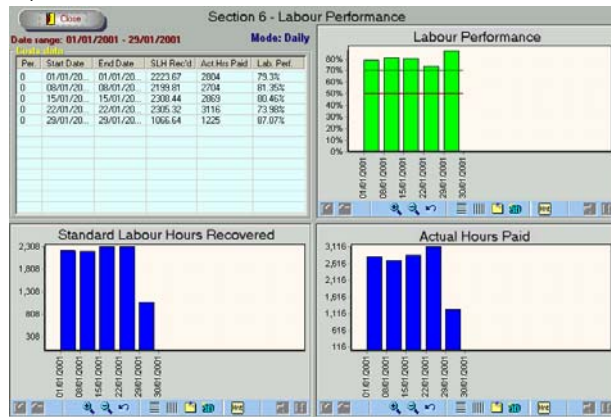
The indicator for the Costs section is the variance of Actual costs for Labour, Raw Materials and Packaging, from the Standard costs. These values can only be displayed by period as actual quantity and costs are only documented against a period not against a Product and period as with the other calculations.



- The chart shows the actual costs of production, split into the three areas, labour, raw materials and packaging, which are stacked to give a total cost of production.
- Labour and Material Costs are shown in the other two graphs.

6. LABOUR PERFORMANCE

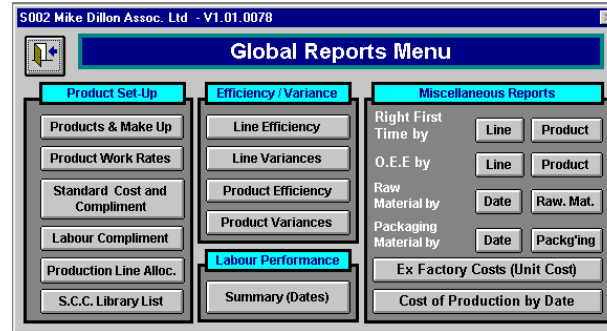
The indicator for the Labour Performance section is the variance between the Standard Labour Hours recovered and the actual hours paid. The information in this section is not specific to any line or product and is displayed only against a period.



- Labour Performance Graph - The calculated Labour Performance figure is plotted against each period.
- Two other graphs in this section reflect Actual Labour Hours and Standard Labour Hours Recovered.

UTILITIES

Produce Plus includes a wide range of reports. These are available from the Global Reports Menu.



The menu is split into separate sections according to the type of information contained within the reports. These reports can all be viewed on screen or printed.

OTHER PRODUCTS

Produce Plus is currently being integrated with the PHAROS - Business Navigator tool from UNIDO. PHAROS provides the user with a general overview of business performance, whereas Produce Plus provides a more focussed look at production and efficiencies.

For more information about PHAROS or the integrated tools, please contact Manufacturing Improvement International Ltd, Grimsby UK, or GOLEM IMS GMBH, Vienna, Austria.

TRAINING AND SUPPORT

Produce Plus is a unique practical training tool and it is included within specific training courses developed by Manufacturing Improvement International Ltd. The Introduction to Performance Measures course covers the methods of how to calculate:

- Overall Effective Efficiency
- Effective Line Performance
- Line Running Efficiency
- Line Utilisation
- Labour Performance
- Overhead Recovery
- Standard Labour Cost and Compliment

These concepts are then explored using the Produce Plus software tool within a factory or with case study data.

Courses are also available on the software and data collection methods alone, without covering the background to the calculations. The software can be provided with or without these training courses, as requested by the purchaser.

CONTACT

For further information on Produce Plus or any other of our software tools please contact:

Manufacturing Improvement International Ltd. Grimsby, N. E. Lincolnshire DN32 9BB UK. Tel +44 (0)1472 348852 Fax +44 (0)1472 348852

or GOLEM IMS GMBH, Vienna, Austria.

Email: info@win2biz.com website: www.win2biz.com



Produce Plus

by Manufacturing Improvement International Ltd and GOLEM IMS GMBH

for strategic productivity improvement and executive education



Introduction

Produce Plus is a simple and easy to use, yet sophisticated PC software package suitable for all levels of management.

Produce Plus is part of a complete package of UNIDO Business Performance Management Software. Together with PHAROS and FIT software it provides for participants of Training Programmes for entrepreneurs.

Produce Plus's six major traffic light indicators - Production, Quality, OEE, Performance/Efficiency, Costs, and Labour Performance - make it possible to compare current results with previously defined targets. The indicators were selected to concentrate on the most important information for managers.

The traffic light colours provide a quick overview of the current status of a business: Green means "good" or "better than expected", amber is "acceptable" and red is "unacceptable".

If a potential problem is identified, the user can access more detailed reports from Produce Plus's Global Reports Menu. From here, many more detailed reports can be viewed on screen and printed, to identify the area where problems may be occurring.

Produce Plus provides a business with an industrial engineering capability in a simple and easy to use tool. The software is an excellent training tool that can be used to raise the awareness of production management.

KEY PRODUCE PLUS OUTPUTS

Produce Plus has many key features that are useful to any manufacturer, but are especially vital to many SME's. The main Produce Plus functions allow you to accurately cost:

- Your line manning.
- Your total production.
- Your individual products.
- Proposed new products.

It can provide managers with accurate ex-factory costs for each of their products at specific work rates and labour compliments. This cost takes into account raw materials, packaging, direct and indirect labour and also allocated overheads. This function alone can be critical in assisting a company realise its true costs of production.

The software can hold information on different types of production, not only for products that are manufactured on a hand or machine line, but also for continuous or intermittent batching processes.

BASIC INDICATOR FEATURES

The Produce Plus software helps managers to monitor key production information and to utilise all that information in order to have better control over their activities. It assists in reviewing the current status of the business and provides support in making important operational and strategic decisions.



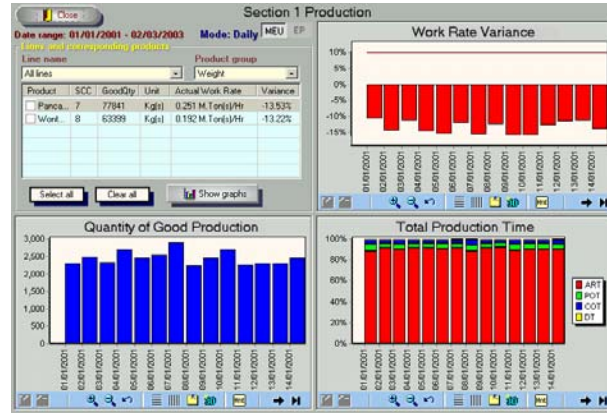
The Produce Plus philosophy is based upon the idea of continuous improvement. The attractive and easy-to-understand indicators make it possible to monitor enterprise performance continually based on production performance targets set by the management itself.

The front screen of traffic light indicators is designed to provide an instant overview of the performance of the company. If a problem area is identified, further detailed charts are available for each section to help to pinpoint the cause of failure.

Standard Cost and Compliment			
Product Code: PR - Pancake Roll			
Work Rate 13.200, Items/Hr/Machine			
Target Performance 95%	Expected Performance		
Qty / Time 2.46, 24 Kg @ per Hr	Total Losses 12.00%		
Cost/Hr: 75.97 Per Hr	Cost / Qty 0.307771 per Kg @		
Standard Labour time: 0.05236 hrs per Kg @	Employment Cost 12.0%		
	Manning 14.33		
Key Labour			
1 Machine Operator	Grade D	Persons 1	Base Rate & Premium 5.46 at Basic Rate
Other Labour During Production			
1 Load Pancake Machine	Grade A	Persons 1	3.96 at Basic Rate
2 Prepare F Rings	Grade A	Persons 2	3.96 at Basic Rate
3 Batter mixer / Service	Grade A	Persons 1	3.96 at Basic Rate
4 Cook F Rings	Grade D	Persons 1	4.46 at Basic Rate
5 Assemble Rate	Grade A	Persons 4	3.96 at Basic Rate
6 Supervisor	Grade F	Persons 1	6.46 at Basic Rate
Outside Work Hours			
1 Hygiene	Grade A	Hours 21	3.96 at 133.0%
2 Engineering	Grade E	Hours 6	5.96 at 133.0%

1. PRODUCTION

The indicator for the Production section is a reflection of Variance of Actual Work Rate from the standard.

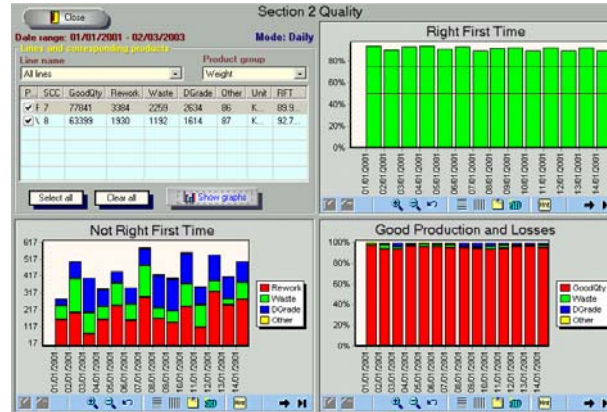


Work Rate Variance Graph - When the user selects a Product or Line from the data list, this bar chart displays the work rate variances for each period. The graph also displays the upper and lower limits of the acceptable range that the user has defined, so it is possible to see where each period's value lies in comparison to the range.

- The two other graphs reflect Production Quantity and Production Time

2. QUALITY

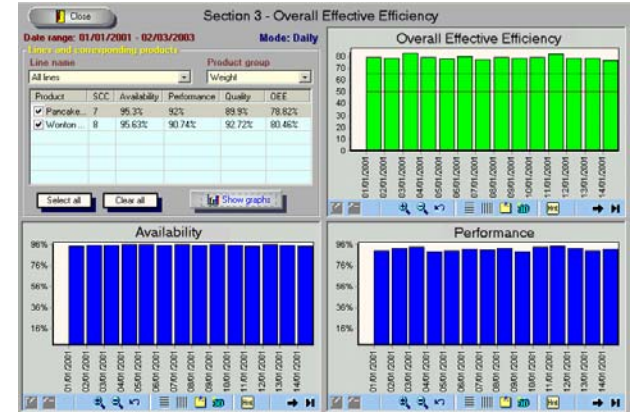
The indicator for the Quality section is a reflection of Right First Time as a percentage of total production.



- Right First Time Graph - When the user selects a Product or Line from the data list, this bar chart displays the right first time percentage for each period. The user can select to display the percentage for each single period, or the accumulated percentage.
- The other two graphs in this section represent Not Right First Time and Total Production.

3. OVERALL EFFECTIVE EFFICIENCY

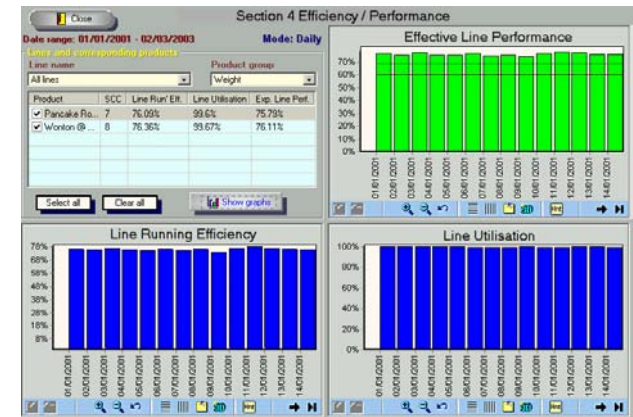
The indicator for the OEE section is a percentage value for the Overall Effective Efficiency (also known as Overall Equipment Effectiveness) of all products or lines. Three aspects are looked at, Availability, Performance and Quality.



- OEE Graph - When the user selects a Product or Line from the data list, this bar chart displays the OEE percentage for each period.
- The two other graphs show Availability and Performance.

4. EFFICIENCY / PERFORMANCE

The indicator for the Efficiency and Performance section is a percentage value for the Effective Line Performance of all products or lines. Three aspects are looked at, Line Utilisation, Line Running Efficiency, and Effective Line Performance.



- Effective Line Performance Graph - When the user selects a Product or Line from the data list, this bar chart displays the ELP percentage for each period.
- Two other graphs are shown which reflect Line Utilisation and Line Running Efficiency.